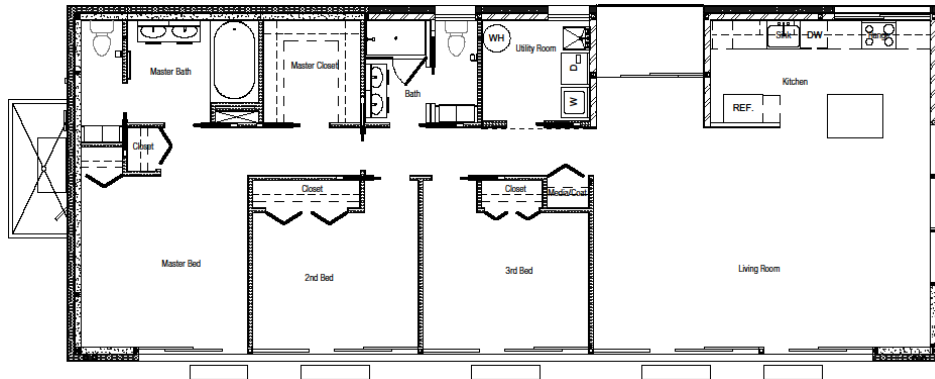


CUSTOM DESIGN PRECEDENTS

CUSTOM DESIGN PRECEDENT #1: MIRRORING PROJECT



Design Task: Home is mirrored in the east-west direction

Time: 6 hrs. drafting time and 1 hr. project management time

Plan Updates:

A2.0 – A2.7: Update Notations, move viewports, update detail callouts

A3.1 – A3.3: Update Notations, move viewports, update detail callouts

A4.0 – A4.3: Update Level, move viewports and update detail callouts

A4.4 – A4.5: Update detail callouts, move viewports

A7.1 – A7.3: Update detail callouts, move viewports

A9.1 – A9.3: Update detail callouts, move viewports

S2.0 – S2.2: Update detail callouts, move viewports

Shop Drawing Updates:

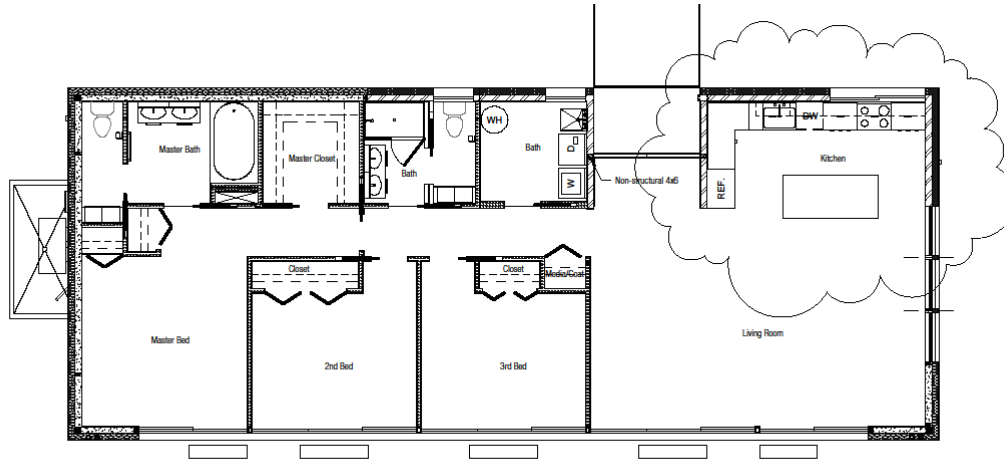
K1.2 – K1.3: Update detail callouts, move viewports

K2: Update detail callouts, move viewports

K3.1 – K3.4: Update detail callouts, move viewports

All wall panel and faux panel shop drawings have to be reviewed for proper annotation placement and dimensioning.

CUSTOM DESIGN PRECEDENT #2: KITCHEN UPDATE



Design Task: Create L shaped kitchen by removing a wall and relocating the refrigerator and pantry
Time: 6 hours drafting time and 1 hour of designer's consultation time

Plan Updates:

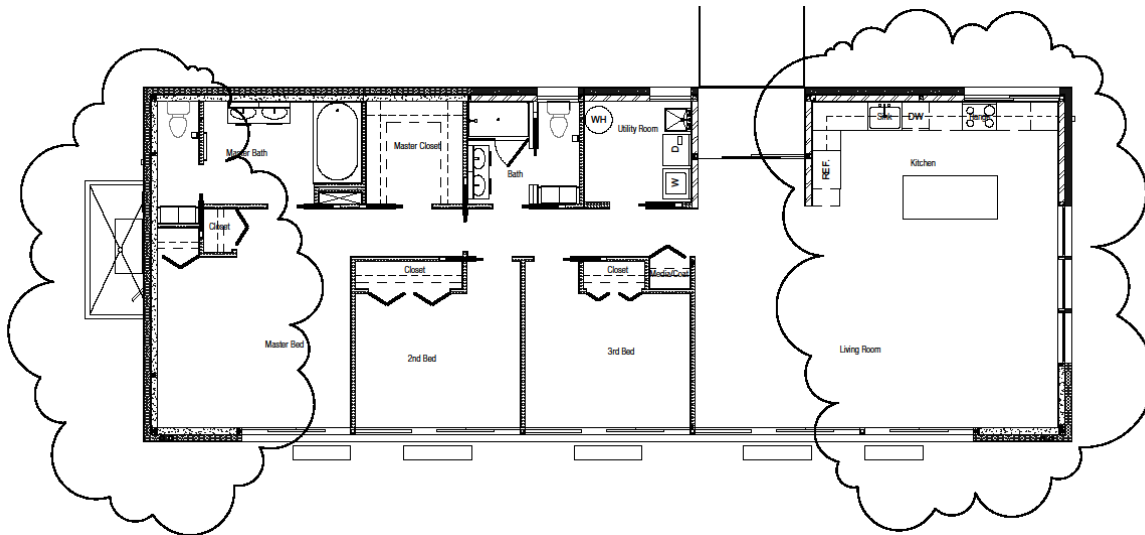
A2.1: Update kitchen layout

A2.3: Update electrical outlets to reflect new kitchen plan

A2.4: Update light switch placement due to removal of kitchen wall.

A7.1: Update kitchen plan, kitchen section, kitchen elevations, kitchen schedules

CUSTOM DESIGN PREC. #3: ENLARGEN HOME BY EXTENDING LENGTH OF HOME BY 4'-0"



Design Task: Extend east and west wall by 2' each side, making home 4'-0" longer.

Time: 15 hours drafting time, 5 hrs. project management, 3 hours of designer's consultation

Plotting: This design change will not fit on our standard 11x17 page, therefore we will have to plot the project out on 22 x 34. Therefore there will be additional charges for plotting and supplies.

Engineering: This customization will require us to work with an engineering firm. Updating the structure typically costs \$1,000. However, depending on the location of this project additional charges may apply.

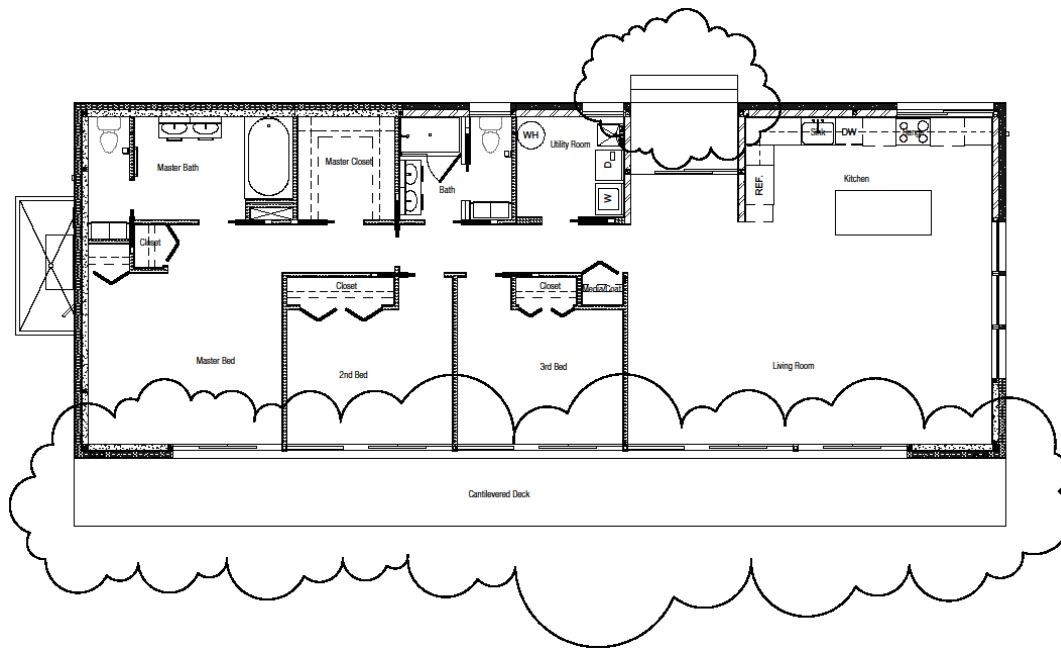
Plan Updates:

- A2.0: Update foundation walls to line up with wall panels above, move utility alcove, update dimensions.
- A2.1: Update dimensions, update master bath and kitchen to reflect increase, update visible wall panels, update window and door package.
- A2.3: Update outlets, HVAC supply and return locations, furniture layout
- A2.4: Update lighting fixture locations, wiring, under cabinet lighting.
- A2.5: Update beam locations and sizes, plywood sheathing, axonometric views at the corners
- A2.6: Update beam locations, add additional I-Joists, update strapping and detail callouts
- A2.7: Extend roof, move vent stack locations, update scupper details
- A3.1– A3.2: Update Kynar and window locations/callouts
- A4.0 – A4.2: Update insulation, detail callouts, ground lines, keynotes
- A7.1: Update kitchen plan, kitchen section, kitchen elevations, and kitchen schedules
- A8.1: Update schedules and legends
- A9.1: Update utility alcove
- S2.0: Update foundation wall locations, dimensions, detail callouts, vent locations, HVAC alcove
- S2.1: Update foundation wall locations, add I-joists as needed, update detail callouts, I-joist blocking, shear wall and hold down locations, bottom plates for wall panels.
- S2.2: Update shear walls, detail callout locations, dimension, required blocking locations, top plates, I-joists

Shop Drawing Updates:

- K0.1 – K0.3: Update Kit lists
- K1.1: Update Kynar schedule, flashing schedule, corrugated schedule
- K1.2 – K1.4: Update Kynar callouts
- K1.5 – K1.8: Update schedules
- K2: Update dimensions
- K3.0: Update bundles
- K3.1 – K3.4: Update wall panel sizes and locations. Update all wall panel and faux wall panel shop drawings.

CUSTOM DESIGN PRECEDENT #4: UPDATE ENTRY & DECK



Design Task: Eliminate the standard ramp and concrete steps and replace them with concrete steps and a cantilevered deck

Time: 11 hours drafting, 4 hours project management, and 3 hours of designer's consultation time

Engineering: We will have to involve our engineers to help engineer the steps and deck

Plan Updates:

A2.0: update foundation to show concrete steps

A2.1: Update plan to show concrete steps and cantilevered deck and railing

A3.1 – A3.3: Update bottom faux panels, add railings, detail callouts

A4.0 – A4.5: Update faux panels at back of home, add deck, and stairs at entry

A5.8: Update front entry threshold detail

A9.1 – A9.2: Eliminate these pages as they no longer apply

S2.0: Update foundation to include concrete steps

S2.1: Update floor joists to include cantilevered deck

S3.4: Create new deck details

Shop Drawing Updates:

Update shop drawings to eliminate some of the bottom Kynar flat panels and bottom faux panels

CUSTOM DESIGN PRECEDENT #5: ALTERNATIVE SIDING OPTION

Design Task: Eliminate the standard Kynar metal siding package and update with a wood tongue and groove siding

Time: 17 hours drafting, 3 hours project management, and 4 hours of designer's consultation time

Plan Updates:

A3.1-A3.3: Update siding

A4.0 – A4.5: Update siding

A5.1 – A5.8: Eliminate existing details and replace with a new sill, jamb, head, coping, base, and corner details

Shop Drawing Updates: Eliminate Kynar panels and flashing. Update wall panels to reflect necessary details for wood siding.